

Upcoming School of Drama Productions

The Who's Tommy

music and lyrics by Pete Townshend

book by Pete Townshend and Des McAnuff

directed by Shanga Parker / musical direction by Scott Hafso

April 9-30, 2006

Years after being struck deaf and dumb, Tommy discovers that his unusual talent for pinball might hold the key to breaking out of his catatonia and breaking into a life of international superstardom. Join us for such rock hits as "Pinball Wizard" and "See Me, Feel Me" in this spectacular musical— and winner of six Tony awards.

Humor Me!

conceived by Judith Shahn and ensemble

directed by Judith Shahn

April 30-May 14, 2006

In this original piece created by faculty member Judith Shahn and MFA acting students, the ensemble interweaves actual interviews from people of many backgrounds to reveal what makes us laugh. Is humor cultural or national? Are there some things that are universally funny? The ensemble intends to find out and add a few laughs of their own along the way!

The Three Birds

by Joanna Laurens

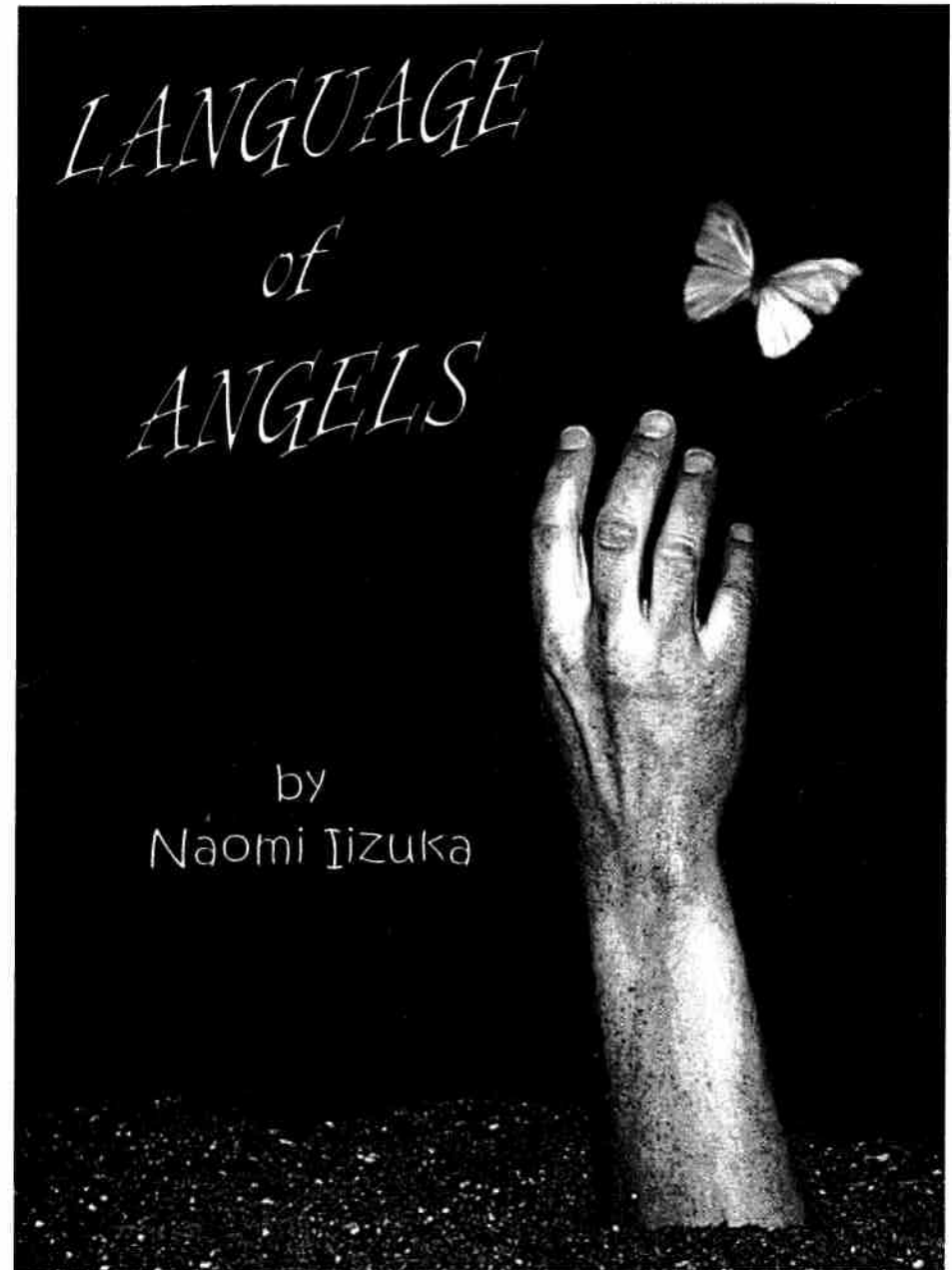
directed by Tamara Fisch

May 21-June 4, 2006

Searing language and an utterly modern sensibility reinvent Sophocles' lost tragedy in this startling adaptation of the story of Tereus and the struggle to control his violent yearning for his wife's sister. This story of love, obsession and the loneliness of the outsider was declared "a tale whose passion leaves scorch marks on the imagination" by The London Daily Standard.

***Tickets available at 206.543.4880 and
<http://depts.washington.edu/uwdrama>***

Sign up for E-NEWS at the website listed above.



UW
SCHOOL OF
Drama

The Penthouse Theatre
Feb. 26th—March 12th, 2006
66th Season
437th Production

Language of Angels by Naomi Iizuka

Director	Daniel Cohen
Set Design	Edward Ross
Costume Design	Kathryn Goodman
Lighting Design	Melinda M. Short
Sound Design	Daniel Cohen
Stage Manager	Emily Johnson
Technical Director	Jerry Collum
Master Electrician	David Hult

Assistant Stage Manager	Berwinne Johnson
Assistant Lighting Designer	Genevieve Kolve
Costume Assistant	Zoe Zarkades
Properties Master	Edward Ross
Dialect Coach	Judith Shahn

Electrics Crew	Diane Baas, Joe Terrenzio and the 212 lighting students
Set Construction Crew	Edward Ross, Stephen Dobay
Painting Crew	Edward Ross
Costume Construction Crew	211, 291 costume lab students, Kathryn Goodman, Martin Sanchez
Running Crew	Janette Armand, Christine Calderbank, Nolan Cho, Rebecca Drapkin, Chris Hodgson, Hyun Kyoung, Peter Lucier, Sarah Maier, Joe Mangialardi, Markie Miller, Terra Morgan, Noel Pittman, Elaine Wood Quaife, Emily Sershon, Jennifer Weivoda, Jason Wonacott

Spotlight on Design

The MFA Program in Design prepares students for professional careers as scenic, costume, or lighting designers in theatre, dance, opera and other live performance. This focus reflects the school's distinguished history in performance-based training, Seattle's vital performance community, and the professional interests of the faculty, who are all practicing artists of national renown. The Design Program fosters the designer's individual artistic vision, graphic skills, and responsibilities as interpreter, collaborator and specifier. A low faculty to student ratio provides close interaction between students and the School's faculty and staff.

The MFA program is three years in length. The first two years are devoted to class and studio work and production projects. In the third year, students complete an internship with a professional company or designer before returning to the School of Drama for a final thesis project.

Professionals working in Seattle are regularly invited to attend classes and offer critiques or discuss their work and students may frequently assist faculty on outside projects.



Costume designs from the upcoming production of *The Who's Tommy*. Rendered by MFA thesis candidate Jessica Lustig.

The design program is enhanced by the scope of our facilities. Students work on a variety of stages at the School of Drama, including proscenium, thrust, arena and end stage. The School's costume shop, scene shop, and electrics shop are all on campus, are well-equipped and staffed with full-time professional artisans.

Are you missing out?

Have you subscribed to our E-News yet? If not, visit our website and sign up today. It's easy and takes less than a minute. We'll send you monthly e-mails reminding you of productions, special events and other significant news from the School of Drama.

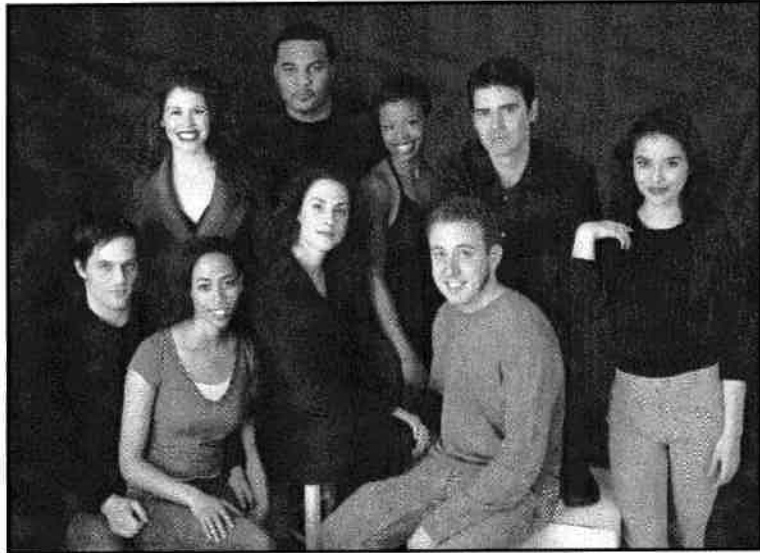
Join the E-News list at: <http://depts.washington.edu/uwdrama>

Don't worry! We respect your privacy and will not sell or trade your information and you completely control your own subscription.

Special Thanks

ACT Theatre, Bob Boehler, Valerie Curtis-Newton, Cornish College for the Arts, The Empty Space Theatre, Tamara Fisch, INTIMAN Theatre, Mark Jenkins, Jon Jory, Tom Lynch, Steve Pearson, Portland Center Stage, Linda Ross, Seattle Children's Theatre, Seattle Opera, Seattle Repertory Theatre, Deb Trout, Village Theatre

Imagine you were a casting director...
So many great actors to choose from!



Showcase 2006

You've been watching their work for the last three years. Now, join the UW School of Drama's graduating MFA acting class in their Showcase Audition performance. Before departing for L.A. and N.Y., these artists show off their talents in Seattle. From here they perform for casting directors, agents and other VIPs in the business. Join us for this thrilling send off party! Directed by UW Professor, Jon Jory.

Seattle Repertory Theatre
May 8th

7pm Reception
8pm Performance
Party with actors to follow

For ticket information contact Danny Geiger at (206) 221-6797

School of Drama HONORARY ADVISORY BOARD

David Armstrong *The 5th Avenue Theatre*

John Aylward *Alumnus and Actor*

Kurt Beattie *ACT Theatre*

Timothy Bond *Oregon Shakespeare Festival*

Linda Hartzell *Seattle Children's Theatre*

Lori Larsen *Alumna and Actor/Director*

Kevin Maifeld *Seattle Children's Theatre*

Daniel J. Mason *Seattle Repertory Theatre*

Allison Narver *The Empty Space Theatre*

Sharon Ott *Director*

Pat Patten *Director*

Laura Penn *INTIMAN Theatre*

Pamela Reed *Alumna and Actor*

Marilynn Sheldon *The 5th Avenue Theatre*

Bartlett Sher *INTIMAN Theatre*

Susan Trammell *ACT Theatre*

The Cast

In order of appearance

Seth Quinlan Corbett*

Celie Jessica Martin

Kendra Mary Bliss Mather*

JB Luke Stanhope*

Danielle Lenne Klingaman*

Michael Barzin Akhavan*

Allison Montana von Fliss*

Billy David Folsom*

* Denotes member of the Professional Actor Training Program (PATP)

Play Setting and Time

A night in 1987 and afterwards—rural North Carolina

Part 1 — The inside of a cave — before, after and in between

Part 2 — A back lot, a mountain top — past, present & future

Part 3 — The end of the road, Danielle's place — later, much later

The play will be performed without an intermission

Language of Angels is presented through special arrangement with Playscripts, Inc.
www.playscripts.com

School of Drama
EXECUTIVE DIRECTOR
Sarah Nash Gates

FACULTY

Professors

Sarah Nash Gates,
Robyn Hunt, Jon Jory,
Steve Pearson, Barry Witham

Associate Professors

Sarah Bryant-Bertail, Valerie
Curtis-Newton, Mark Jenkins,
Odai Johnson, Thomas Lynch,
Shanga Parker

Assistant Professors

Geoff Korf, Catherine Madden

Adjunct Faculty

Herbert Blau

Senior Lecturers

Judith Shahn, Deborah Trout

Lecturer

Jerry Collum

Part Time Faculty

Geoffrey Alm, Dominic CodyKramers,
Scott Hafso, Cathy Hunt,
Melissa Kerber

RETIRED & EMERITUS FACULTY

Jack Clay, Betty Comtois, James Crider,
Robert Dahlstrom, William Forrester,
Vanick Galstaun, Agnes Haaga, Robert
Hobbs, Jack Sydow, Aurora Valentinetti,
Jack Wolcott

STAFF

Arielle Akehurst, *office assistant*
Kris Bain, *director of communications*
Jordan Baker, *stage technician*
Bob Boehler, *stage technician*
Sue Bruns, *graduate program*
Alex Danilchik, *stage technician*
Bill Dock, *computer specialist*
Josie Gardner, *costume shop manager*
Danny Geiger, *director of gifts and donor*
relations

Kathy Holliday, *academic advisor*
Dave Hult, *master electrician*
Dena Petersen, *fiscal specialist*
Juniper Shuey, *assistant to the*
general manager
Deborah Skorstad, *costume lead*
Anne Stewart, *general manager*
Alan Weldin, *scene shop manager*
Carol Young, *administrator*

School of Drama
ADVISORY BOARD
Mark B. Levine, Chair

Therese Barnette
Mark Chamberlin
Brad Edwards
Tom Estep
Elaine Ethier
Jean Burch Falls
Kathy Page Feek
Gary Furlong

Ellen Hazzard
Stephanie Hilbert
Alice Jean Lewis
Nancy Mertel
Carla Montejo
Nadine Murray
Kerry Richards
Patti Rosendahl

Peggy Scales
Ron Simons
Elisabeth Squires
Tammy Talman
John Vadino
Howard Voorheis
Joan Voorheis
Kyoko Matsumoto Wright



The School of Drama is proud to be a member of Theatre Puget Sound

Production Notes

God appears & God is Light
To those Poor Souls who dwell in Night
But does a Human Form Display
To those who Dwell in Realms of Day.

—William Blake, “Auguries of Innocence”

About the Author:

Naomi Iizuka was born in Tokyo and had a multi-national childhood, living in Japan, Indonesia, Holland, and Washington, D.C. She earned her BA from Yale University, her MFA in Playwriting from UCSD, and is now on the faculty at UC Santa Barbara. Naomi's controversial and thought-provoking work has been produced and developed in such prestigious venues as: Berkeley Repertory Theatre, San Francisco's Campo Santo & Intersection for the Arts, Austin's Frontera@Hyde Park, New York's NYSF/Joseph Papp Public Theatre, The Brooklyn Academy of Music, Soho Rep, Tectonic Theatre, San Diego's Sledgehammer Theatre, Montreal's Alternate Theatre and the Edinburgh Festival. Her plays have also been workshopped by San Jose Rep, GeVa Theatre, Bread Loaf, Sundance Theatre Lab, the McCarter Theatre, the Bay Area Playwrights' Festival, Midwest PlayLabs, and New York Theatre Workshop.



Naomi Iizuka

The youngest playwright to have three shows produced at Humana (*Polaroid Stories*, *Aloha*, *Say the Pretty Girls*, and *War of the Worlds*), she is currently working on commissions from the Guthrie Theater, Actors Theatre of Louisville, the Kennedy Center, the Children's Theatre of Minneapolis, and the Mark Taper Forum. Naomi is a member of New Dramatists and the recipient of numerous awards. They include a Whiting Award, a Rockefeller Foundation MAP grant, a Gerbode Foundation Fellowship, an NEA/TCG Artist-in-Residence grant, a McKnight Fellowship, a PEN Center USA West Award for Drama, the Stavis Award from the National Theatre Conference, Princeton University's Hodder Fellowship, and a Jerome Playwriting Fellowship.

excerpted from http://aristophanes.ucsd.edu:591/tdalum/pub_intro.html